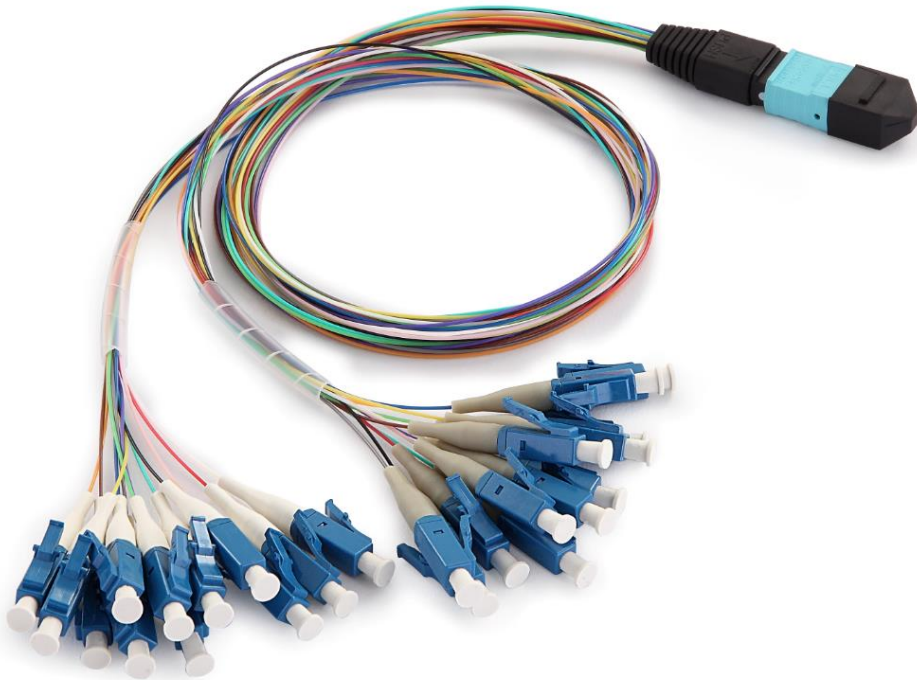


MTP/MPO Hydra Cable



MPO/MTP Hydra cable assemblies are deployed inside plug and play cassette modules. It is used for multi-fiber to single-fiber splitting out interconnects. This solution is a 12-colored 0.9mm cable utilizing MPO/MTP connector on one end and generic connectors (such as LC, SC, FC, etc.) on the other end. They are available for purchase as a bundle with plug and play modules, MPO/MTP Adapter Plates, and other solutions. It is fully configurable, available in 8/12/16/24 fibers versions as well as Multi-mode (Standard 50/125, 62.5/125, BI 10Gig 50/125) and Single-mode fiber types.

Applications

- Data Center Interconnect
- Backbone Installations
- Telecommunication Networks
- Broadband/CATV Networks
- LAN/WAN Premises

Features

- Low insertion loss and high return loss
- High precision connector
- PC UPC APC end face polish
- Fiber count available in 4~24

- Option for LSZH, PVC or Hytrel loose tube
- 100% factory terminated and tested
- Customized length available
- ROHS Compliant

Standards compliance

- EIA/TIA 604 series
- IEC 61754 Series
- IEC 61753-1
- GR 1435-CORE
- GR 326-CORE

General Specification

Construction	Description																					
Fiber Count	8~24 Fibers																					
Fiber Mode	Single mode: G652/G657 Multimode: OM1 OM2 OM3; OM4																					
Fiber Brand	SMF-28® Ultra optical fiber Corning ClearCurve® multimode fiber																					
Cable Jacket Material	Low Smoke Zero Halogen (LSZH) PVC Hytrel																					
Cable Jacket Ratings	Riser (OFNR) Plenum (OFNP)																					
Cable Jacket diameter	600µm; 900µm																					
Cable Jacket Color	Blue, Orange, Green, Brown, Grey, White, Red, Black, Yellow, Purple, Pink, Aqua																					
Polarity	Customized																					
Ferrule	12F, 16F, 24F																					
Connector Type	MTP, MPO																					
Connector Brand	US Conec MTP, Senko MPO, Nissin MPO, Sanwa MPO, FURUKAWA MPO																					
MPO/ MTP	<table border="1"> <thead> <tr> <th></th> <th>Ferrule</th> <th>SM(APC)</th> <th>SM(PC)</th> <th>OM3</th> <th>OM4</th> <th></th> </tr> </thead> <tbody> <tr> <td>Connector Color</td> <td>Low loss</td> <td>Yellow</td> <td>Yellow</td> <td>Aqua</td> <td>Magenta</td> <td>or customized</td> </tr> <tr> <td></td> <td>Standard</td> <td>Green</td> <td>Blue</td> <td>Aqua</td> <td>Magenta</td> <td></td> </tr> </tbody> </table>		Ferrule	SM(APC)	SM(PC)	OM3	OM4		Connector Color	Low loss	Yellow	Yellow	Aqua	Magenta	or customized		Standard	Green	Blue	Aqua	Magenta	
	Ferrule	SM(APC)	SM(PC)	OM3	OM4																	
Connector Color	Low loss	Yellow	Yellow	Aqua	Magenta	or customized																
	Standard	Green	Blue	Aqua	Magenta																	
Boot Color	Green/Black/ or Customized																					
Single-fiber connector	LC, SC, FC, etc.																					
Operating Temperature	-20°C to +70°C																					
Storage Temperature	-40°C to +85°C																					

Information and specifications are subject to change without notice.
Please visit www.china-tscom.com for more information

8 Jinxiu Middle Road, Pingshan, Shenzhen, Guangdong, 518118, P. R. China
+86 755 32983688 | info@china-tscom.com | www.china-tscom.com



Technical Specification

MPO / MTP Termination

Optical Properties	Single mode		Multimode	
	Low loss	Standard	Low loss	Standard
Insertion Loss (dB)	≤ 0.35 (Typical: ≤ 0.25)	≤ 0.75 (Typical: ≤ 0.4)	≤ 0.35 (Typical: ≤ 0.2)	≤ 0.60 (Typical: ≤ 0.35)
Return Loss (dB)	PC ≥ 50 ; APC ≥ 60		PC ≥ 20	
Wavelength (nm)	1310/1550		850/1300	
Durability	≤ 0.2 (dB)typical change, 50 matings			

Single-fiber connector Termination

Optical Properties	Single mode	Multimode
	Insertion Loss (dB)	UPC ≤ 0.2 ; APC ≤ 0.3
Return Loss (dB)	PC ≥ 50 ; APC ≥ 60	PC ≥ 20
Wavelength (nm)	1310/1550	850/1300
Durability	≤ 0.3 (dB)typical change, 500 matings	